

高平台三通球阀-QT18/QL18

3-way Ball Valve With Mounting Pad

安装尺寸 Dimensions

标准规范 Standard specification

设计标准 Design: API 608

公称压力 Rating: 1000PSI

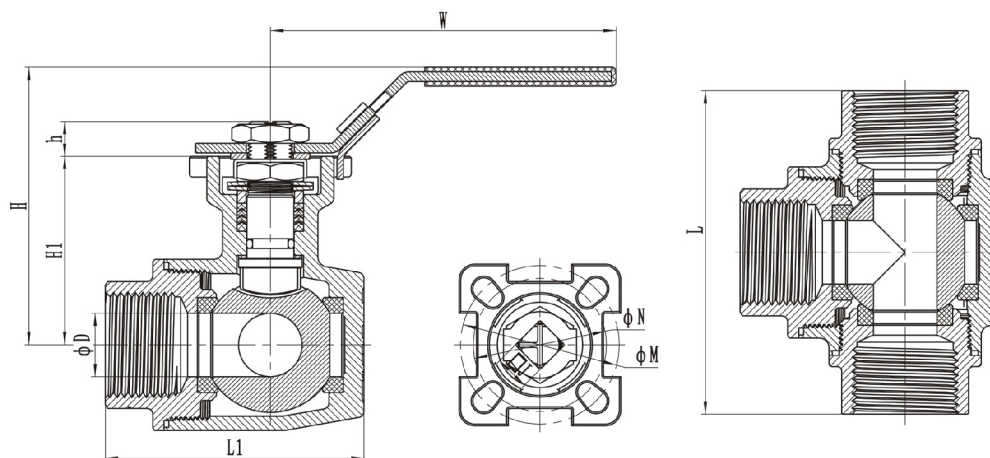
螺纹标准 Thread: ASME B 1.20.1, BS21, DIN2999/259,

ISO228-1, JIS B 0203, ISO7-1

试验标准 Inspection: API 598, EN12266

设计特点 Design features

- 1、缩径设计 Reduced bore
- 2、阀杆防暴出设计 Blow-out proof stem
- 3、ISO 5211标准执行器安装平台设计
ISO 5211 standard actuator mounting pad
- 4、阀杆部位垫片+O型圈+填料多重密封
Stem packing with O-ring and multiple seal
- 5、L型&T型 可选 L type & T type (option)



SIZE	D	L	L1	W	H	H1	h	J	M	N	ISO5211
1/4"	9	80	64	141	75	42	9	9	36	42	F03/F04
3/8"	11	80	64	141	75	42	9	9	36	42	F03/F04
1/2"	12.5	80	64	141	75	42	9	9	36	42	F03/F04
3/4"	16	83	68	141	82	49	9	9	36	42	F03/F04
1"	20	102	81.5	163	97.5	59.5	11	11	42	50	F04/F05
1-1/4"	25	111	90	163	101	63	11	11	42	50	F04/F05
1-1/2"	32	126	106	187	112.5	73.5	14	14	50	70	F05/F07
2"	38	146.5	123	187	122	82.5	14	14	50	70	F05/F07